

Note:<注意>

Mechanical:<机械性能>

.Contact force: 70g±20g at 1.0mm working stroke

<接触弹力: 70g±20g在1.0mm的工作行程>

.Full stroke:1.40mm

<最大行程: 1.40mm>

.Life test: 20,000 cycles

<寿命: 20000次>

Electrical:<电气性能>

.Rated current & voltage: DC 12V, 4A

<额定电压, 电流: DC 12V, 4A>

.Contact resistance: 50 milliohm Max.

<接触阻抗: 50 milliohm Max.>

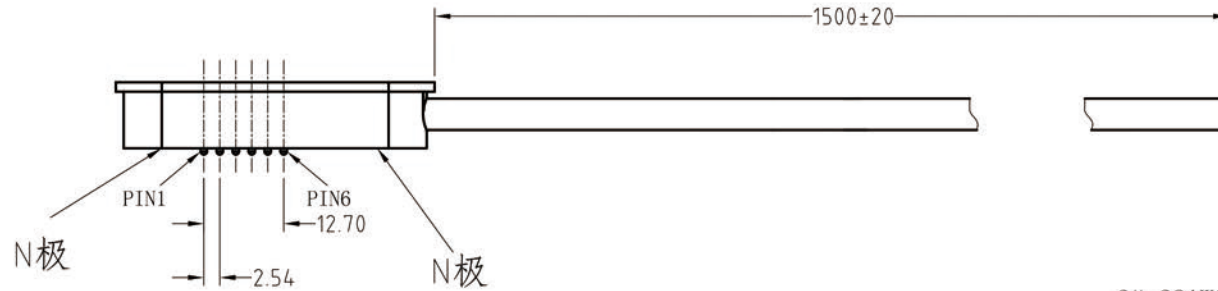
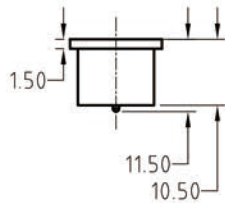
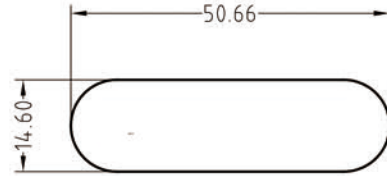
100% open & short test.

<100%导通,短路测试>

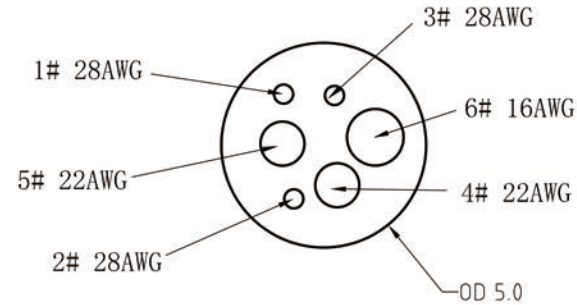


Approve Sign

Pogo pin conn



Line	→ Pogo pin conn
1	1
2	2
3	3
4	4
5	5
6	6



线材剖面示意图

ECN(DCN) NO.	REV	DATE	DESCRIPTION
	D1	2015.08.10	
	D0	2015.08.06	NEW

SCALE	10:1	UNIT:mm	THIS DOCUMENT IS THE SOLE PROPERTY OF CFE CORPORATION CO.,LTD., AND SHOULD NOT BE USED IN WHOLE OR IN PART WITHOUT PRIOR WRITTEN PERMISSION.
ANGEL	±1°	A4	
0~6	±0.10		
6~30	±0.20	DRAW	
30~150	±0.30	CHECK	
GENERAL TOLERANCE UNLESS OTHERWISE NOTED		APPRO	

CFE 东莞市川富电子有限公司
CFE CORPORATION CO.,LTD.

PART NO.	CM-BP48711-06254H0A
FILE NAME	BP487XX
TITLE.	Magnetic Cable Connector