

Note:

Mechanical:

- .Contact force: 80g±20g at 0.9mm working stroke
- .Full stroke: 1.1mm
- .Life test: 20,000 cycles

Electrical:

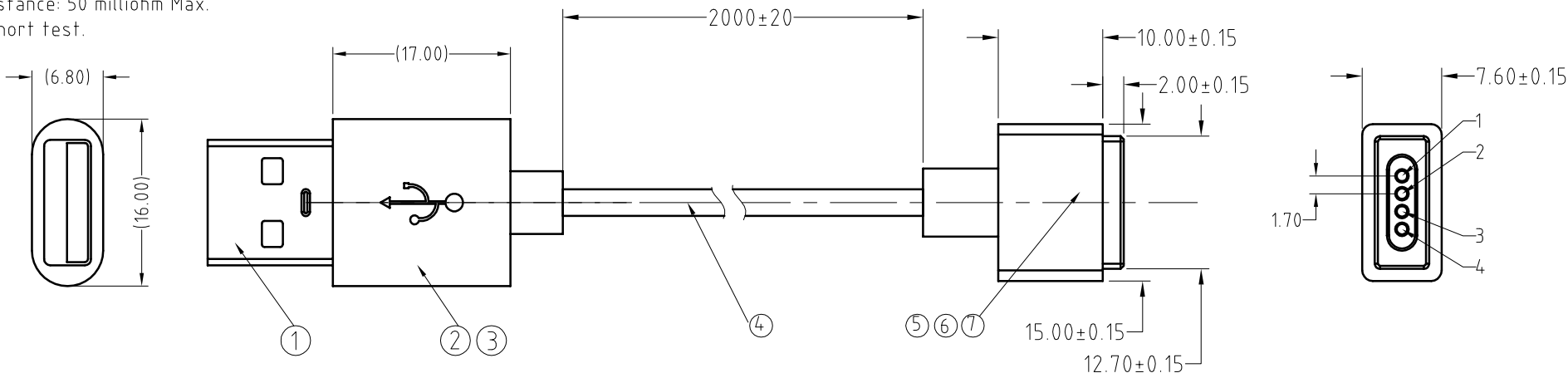
- .Rated current & voltage: DC 12V; 1A
- .Contact resistance: 50 milliohm Max.
- 100% open & short test.

To ensure the best usage, please operate it based on the working height.
Based on the engineering drawings, shall not exceed the maximum allowed compression.

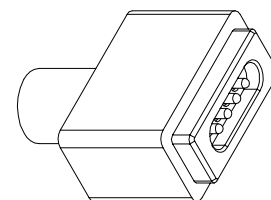
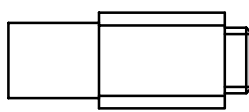
Pogo pin conn



Approve Sign



USB→CONN	
Vcc_1	1 Red
GND_4	2 Black
	3 Black
	4 Red



SCALE	10:1	UNIT:mm	THIS DOCUMENT IS THE SOLE PROPERTY OF CFE CORPORATION CO.,LTD., AND SHOULD NOT BE USED IN WHOLE OR IN PART WITHOUT PRIOR WRITTEN PERMISSION.	东莞市川富电子有限公司 CFE CORPORATION CO.,LTD.	
ANGEL	±1°	A4			
0~6	±0.10				SHEET: 1 of 1
6~30	±0.15	DRAW			
30~150	±0.20	CHECK		PART NO. CM-BP59011-04170H0K	
GENERAL TOLERANCE UNLESS OTHERWISE NOTED		APPRO		FILE NAME BP590XX	
				TITLE. Magnetic Cable Connector	

ECN(DCN) NO.	REV	DATE	DESCRIPTION
	A0	2016.06.03	NEW