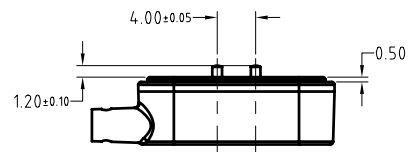
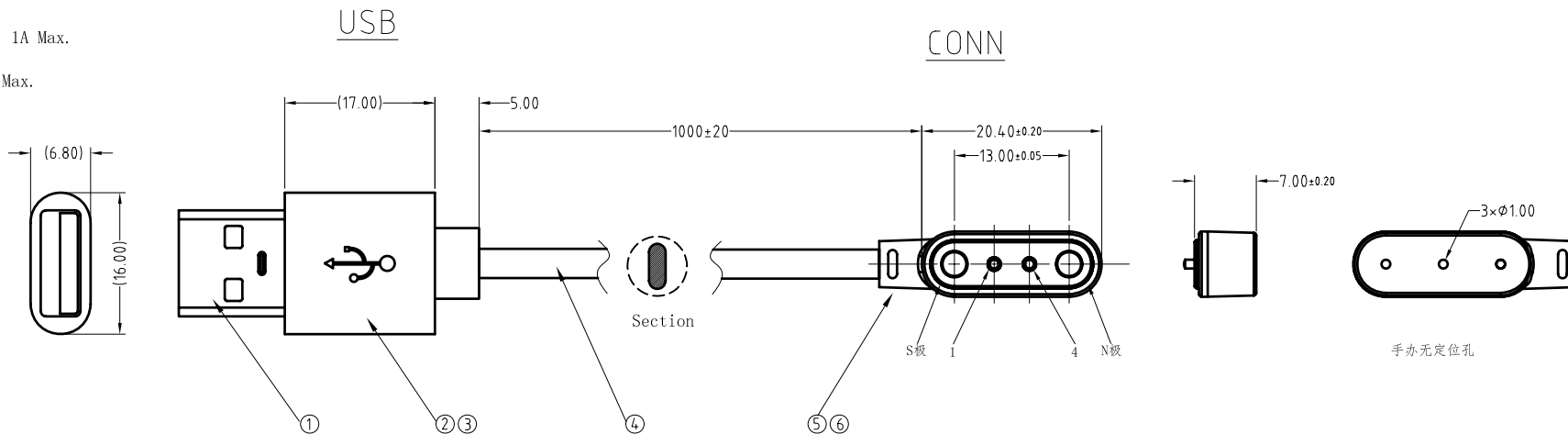


Note:<注意>  
 Mechanical:<机械性能>  
 .Contact force: 40g±20g at 1.0mm working stroke  
 <接触弹力: 40g±20g在1.0mm的工作行程>  
 .Full stroke: 1.2mm  
 <最大行程: 1.2mm>  
 .Life test: 50,000 cycles  
 <寿命: 50000次>

Electrical:<电气性能>  
 .Rated current & voltage: DC 12V, 1A Max.  
 <额定电压, 电流: DC 12V, 1A>  
 .Contact resistance: 50 milliohm Max.  
 <接触阻抗: 50 milliohm Max.>  
 100% open & short test.  
 <100%导通, 短路测试>

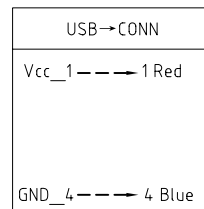


Approve Sign



1	Magnetic Connector <磁吸接头>	M-BP62311-02400H0A	1
1	White PVC 45P 4g <白色 PVC 45P 4克>	B000-P0001	1
1	1.3*3.2 2C 8*0.08 white Jacket PVC 55P 1040mm <1.3*3.2 2芯 8*0.08 白色 外被PVC 55P 1040mm>	X102-0101-XXXX	1
1	White PVC 45P 4g <白色 PVC 45P 4克>	B000-P0001	1
1	Lucency PE 3g <透明 PE 3克>	B000-P9001	1
1	USB/AM 0.025um Au white salt spray test 48H <USB/AM 0.025um金 白色 盐雾48小时>	B000-U1001	1
序号 (NO.)	规格 (Specification)	料号 (P/N)	数量 (Qty)

手办使用B623-H3003



ECN(DCN) NO.	D0	2017.10.27	NEW
REV	DATE	DESCRIPTION	

SCALE	10:1	UNIT:mm	THIS DOCUMENT IS THE SOLE PROPERTY OF CFE CORPORATION CO.,LTD., AND SHOULD NOT BE USED IN WHOLE OR IN PART WITHOUT PRIOR WRITTEN PERMISSION.	东莞市川富电子有限公司 CFE CORPORATION CO.,LTD.	
ANGEL	±2°	A4			
0~6	±0.10		SHEET: 1 of 1	PART NO.	CM-BP62331-02400H0D
6~30	±0.20	DRAW		FILE NAME	BP623XX
30~150	±0.30	CHECK		TITLE	Magnetic Cable / 磁吸充电线
GENERAL TOLERANCE UNLESS OTHERWISE NOTED		APPRO			