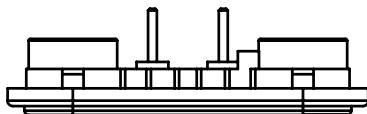
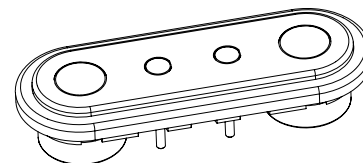
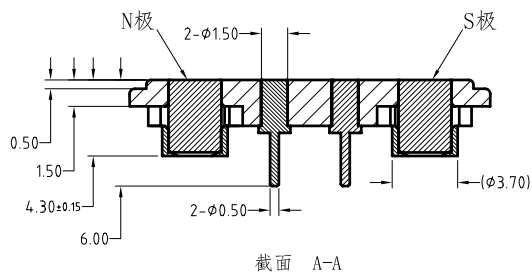
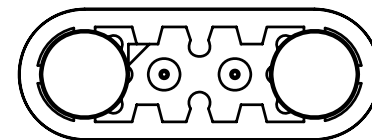
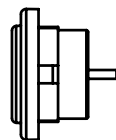
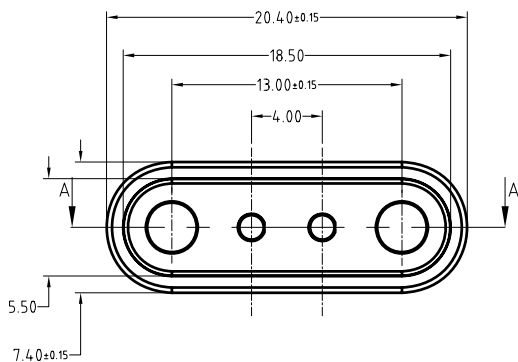
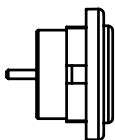


Note: <注意>
 Electrical: <电气性能>
 .Rated current & voltage: DC 12V, 1A.
 <额定电压, 电流: DC 12V, 1A>
 .Contact resistance: 50 milliohm Max.
 <接触阻抗: 50 milliohm Max.>
 100% open & short test.
 <100%导通, 短路测试>



Approve Sign



4	Pin plating 0.125um Au <弹簧针 电镀金0.125um>	B623-W1005	2
3	N52 NdFeB Magnet plating Ni-Cu-Ni+Coppe <N52 钕铁硼磁铁 表面镀镍铜镍卯压铜套>	B623-E1100	1
2	N52 NdFeB Magnet plating Ni-Cu-Ni+Coppe <N52 钕铁硼磁铁 表面镀镍铜镍卯压铜套>	B623-E2100	1
1	Black HTN UL94 V-0 <黑色 HTN UL94 V-0>	B623-H1001	1
序号 <NO.>	规格 <Specification>	料号 <P/N>	数量 <Qty>

SCALE	10:1	UNIT:mm	THIS DOCUMENT IS THE SOLE PROPERTY OF CFE CORPORATION CO.,LTD., AND SHOULD NOT BE USED IN WHOLE OR IN PART WITHOUT PRIOR WRITTEN PERMISSION.	东莞市川富电子有限公司 CFE CORPORATION CO.,LTD.
ANGEL	±2°	A4		
0~6	±0.10		SHEET: 1 of 1	
6~30	±0.20	DRAW		PART NO. M-BP62331-024-00H0F
30~150	±0.30	CHECK		FILE NAME BP623XX
GENERAL TOLERANCE UNLESS OTHERWISE NOTED	APPRO			TITLE. Magnetic connector/磁吸连接器

_____	D1	2017.08.24	磁铁凹槽去掉改为铜套台阶且等级改为N52
_____	D0	2016.11.19	NEW
ECN(DCN) NO.	REV	DATE	DESCRIPTION